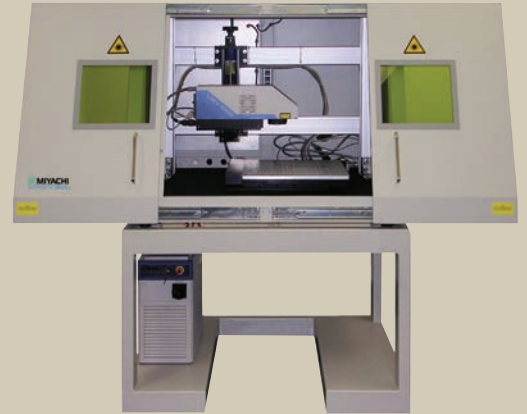


laser marking systems

Laser Marking BW/DW/LMW

- Standard and Custom Systems
- CDRH Class 1 enclosure
- Fiber or Nd:YV04 marker integration
- 24/7 factory tech support
- Free applications development

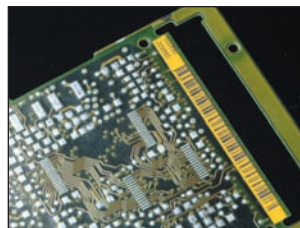
Workstations may be configured with any of the Miyachi Unitek LMF Fiber or LM Series diode pumped laser markers. Let our applications experts help you select the appropriate laser marker and optics for your process!



TYPICAL APPLICATIONS



Various Plastics



PC Boards



Solar and Semiconductor



Promotional Items



Automotive Parts



Medical Parts

DW Rotary System

- High volume part marking
- Simultaneous part loading and marking
- Anti tie-down start controls and interlocking guard for fail-safe operation
- Optional programmable focus compensates for differing part heights
- Custom parts handling and fixturing available



Index Table

LMW System

Economic Turn-Key Workstation

- Manual batch part marking
- Rotary motion available for circumferential marking
- Compact design minimizes required floor space
- Custom fixturing available
- Ask about our extended warranty and preventive maintenance plans



PWB Marking System

- SMEMA-interface to input and output conveyors
- Edge-belt transport conveyor
- Semi-automatic width adjustment
- Non-contact marking, no chemicals, low operating costs
- WindowsXP®-based user interface
- Status light tower
- CDRH Class I compliant



BW System

- Manual and motorized focus
- Motion-coordinated marking
- Large working area accommodates many parts and sizes
- Custom parts handling and fixturing available



Automation Integration Including:

- Conveyorized parts feed
- SMEMA connectivity
- CDRH I compliance in constant material flow environment



Your Local Representative



MEXICO Sales Office:
Pedro Rosales de Leon 7946-200
Fraccionamiento Las Misiones
Ciudad, Juarez, Chihuahua Mexico
Tel: +52.656.623.2719
FAX: +52.656.617.6058
mxsales@muc.miyachi.com

SOUTH AMERICA Sales Office:
Tel: +55 (11) 3712-2389
Fax: +55 (11) 3712-2389
sasales@muc.miyachi.com

ASIA Sales Office:
Unit D, 20/F, Infotech Centre
21 Hung To Road
Kwun Tong, Hong Kong
Tel: +852 2833-6998
FAX: +852 2833-6672
asiapacific@muc.miyachi.com

EUROPE Sales Office:
Miyachi Europe Corporation B.V.
Schootense Dreef 21
NL-5708 HZ Helmond
The Netherlands
Tel: +31 492-54-22-25
FAX: +31 492-53-62-22
info@mec.miyachi.com

Corporate Office: 1820 S. Myrtle Ave. • P.O. Box 5033 • Monrovia, CA 91017-7133 USA
Tel: (626) 303-5676 • FAX: (626) 358-8048 • info@muc.miyachi.com
www.muc.miyachi.com • ISO 9001 Certified Company
24/7 Repair Service: 1-866-751-7378

Specifications subject to change without notice.
Copyright© 2007 Miyachi Unitek Corporation. The material contained herein cannot be reproduced or used in any other way without the express written permission of Miyachi Unitek Corporation. All rights reserved.